

KM-P4845w

KM-P4850w

KM-4845w

KM-4850w

KM-PS4850w

About Documentation

The purpose of this documentation is to prepare and install wide Format Systems onto a network and installation of applications. In addition to installation the documentation can use for troubleshooting post installation issues. The document is divided into sections,

Section 1	System Requirements
Section 2	Machine Configuration
Section 3	Network Connection
Section 4	Installing Applications
Section 5	Submitting plots via FTP
Section 6	Controller Firmware update

Pre-requisites

Knowledge of the fundamentals of current networking technology is required. Knowledge and experience of administrating a Microsoft Windows NT4/2000 domain is recommended. Understanding of the following network protocols, Services and Commands, TCP/IP, Subnet Mask, Gateway, Router, NETBIOS, FTP, HTTP, WINS, DNS, ARP, DHCP, Ethernet.

Notational Conventions

Characters or commands that you type such as **wicp** appear in bold lowercase type. Names of files or folders appear in title caps such as “My Documents”.

Disclaimer

The information in this document is supplied on an As Is basis and is subject to change or be updated at any time.

Section 1

System Requirements

Please read through the following recommendations carefully. They can be very helpful in finding the optimum hardware for your requirements.

Operating system

Windows NT 4.0, Windows 95/98/ME or Windows 2000. For Windows 2000 we recommend Service Pack 3.

Please note that ScanTool has been designed to work with Windows NT4.0, Windows 2000.

Network interface/Configuration:

10/100 Base T Ethernet, the TCP/IP configuration protocol installation is necessary.

Processor & System memory

Dependent on your operating system we recommend following processors and system memory as minimum requirement:

Windows 95/98: Pentium II 233 MHz, at least 32 MB RAM

Windows ME: Pentium II 233 MHz, at least 64 MB RAM

Windows NT 4.0: Pentium II 200 MHz, at least 64 MB RAM

Windows 2000: Pentium II 200 MHz, at least 64 MB RAM

Harddrive

At least 500 MB.

Monitor

At least 1024 x 768 pixels resolution.

Internet browser

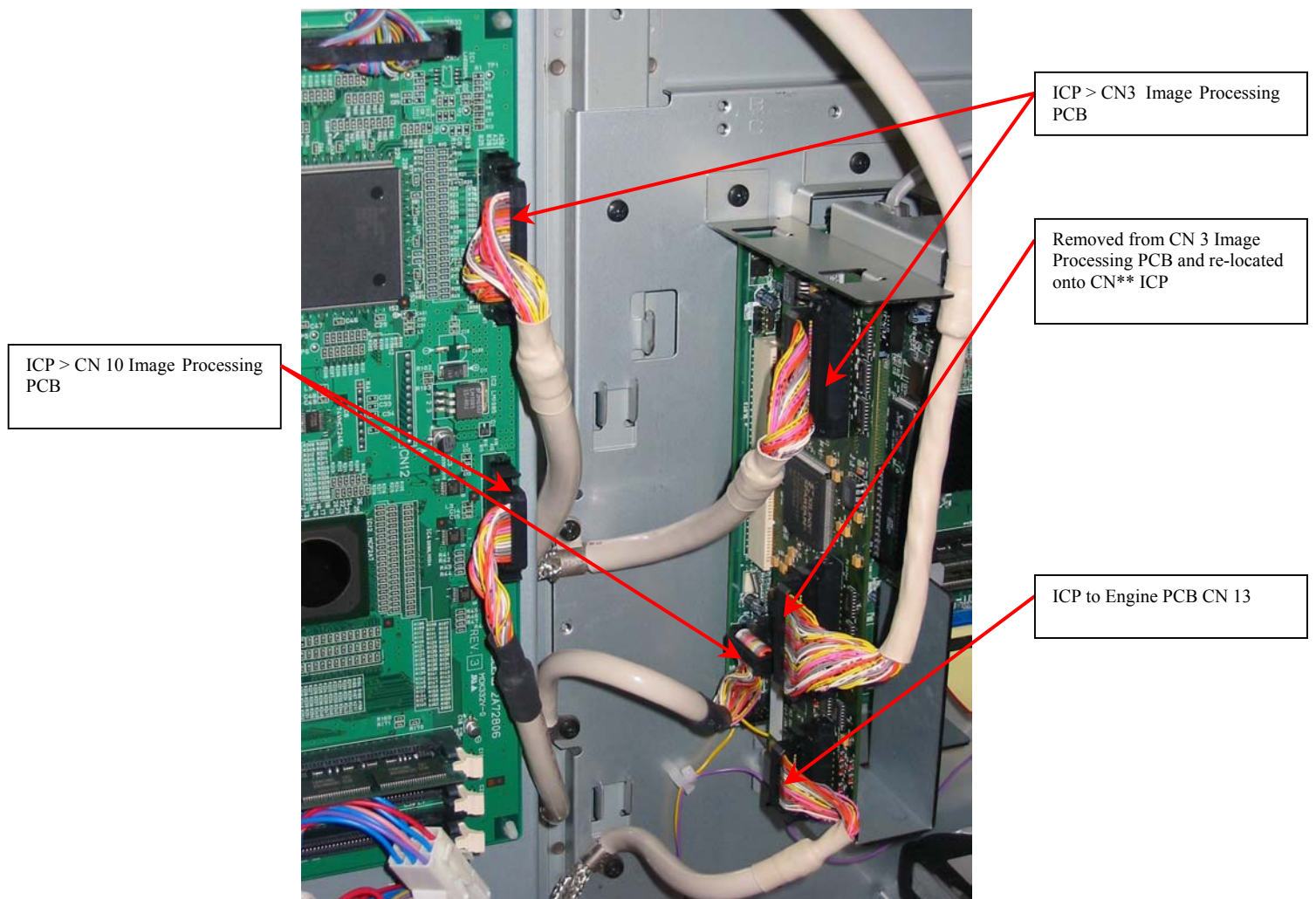
IE 5 and above or Netscape 4 or above.

Section 2

Machine Configuration

Step 1

The Plot System E Controller is an Option on the KM-4845/50w. The picture below illustrates the wiring configuration for the Controller to the machine.



There are also two other connections to make to the machine.

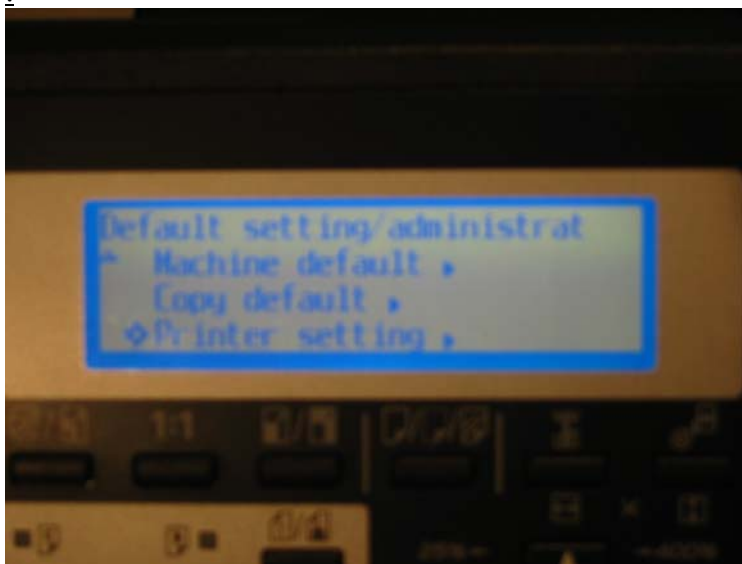
1. The Black and White power supply to the Controller picks up a connection just behind the mains inlet
2. Yellow and purple supply to the motherboard picks a connection just underneath the Image Processing PCB.

Section 2

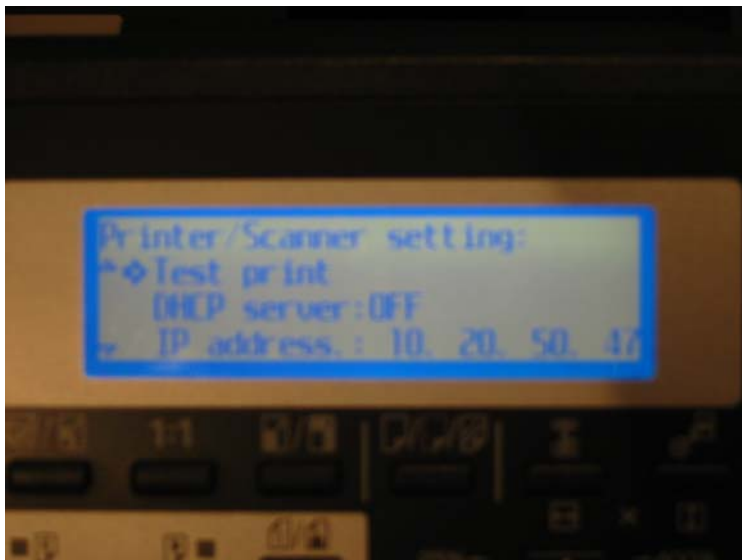
Machine Configuration

Step 2

With the Controller now fitted, power up the machine and wait until stabilisation. Now press the **AAA** on the control panel and scroll down to **Default setting/administrator**. Key in the access code, then scroll down to **Printer setting**.



The Printer menu is displayed as per the below picture.



Select test print from the menu for your records. Configure the menu as follows:

DHCP : OFF

IP address, Subnet mask, Gateway and DNS, as per clients network.

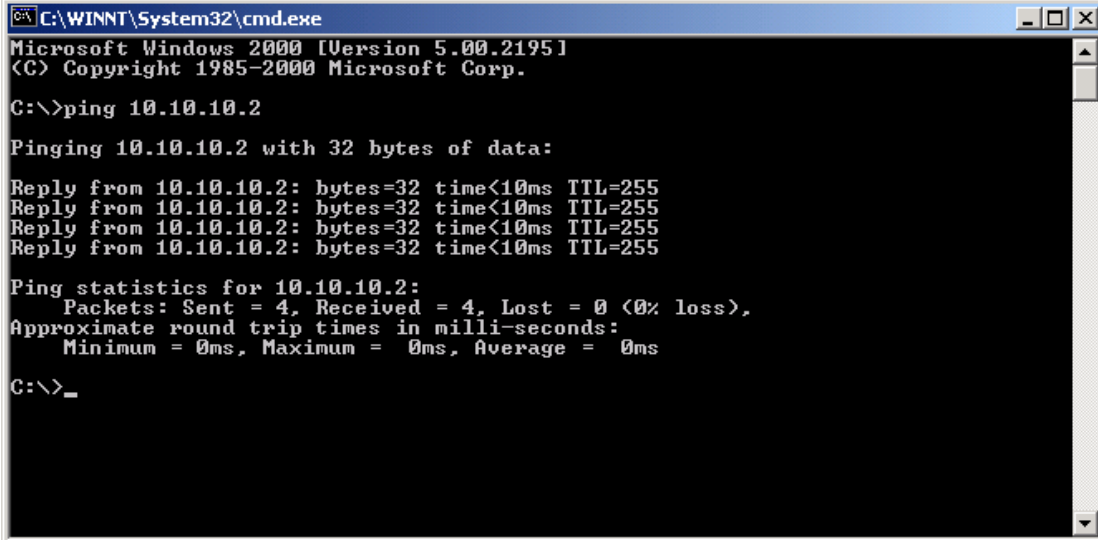
Finally invoke a test print for your records. Machine configuration is now complete.

Section 3

Network Configuration

Step1

Connected the Ethernet cable to the machine, It is recommended to power down the Controller prior to connecting the RJ45 Ethernet cable. From a workstation run the **ping** utility form the **command** DOS program as illustrated below.



```
C:\WINNT\System32\cmd.exe
Microsoft Windows 2000 [Version 5.00.2195]
(C) Copyright 1985-2000 Microsoft Corp.

C:\>ping 10.10.10.2

Pinging 10.10.10.2 with 32 bytes of data:

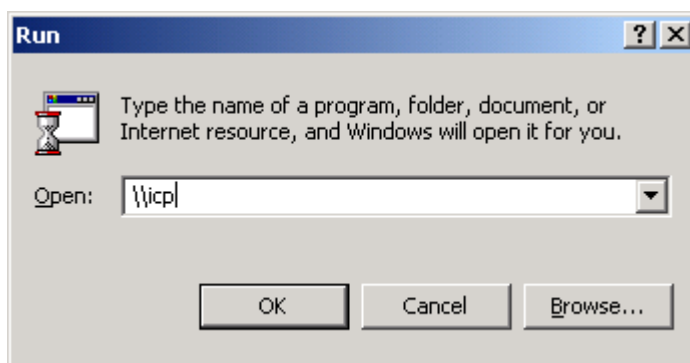
Reply from 10.10.10.2: bytes=32 time<10ms TTL=255
Reply from 10.10.10.2: bytes=32 time<10ms TTL=255
Reply from 10.10.10.2: bytes=32 time<10ms TTL=255
Reply from 10.10.10.2: bytes=32 time<10ms TTL=255

Ping statistics for 10.10.10.2:
    Packets: Sent = 4, Received = 4, Lost = 0 (0% loss),
    Approximate round trip times in milli-seconds:
        Minimum = 0ms, Maximum = 0ms, Average = 0ms

C:\>_
```

Step 2

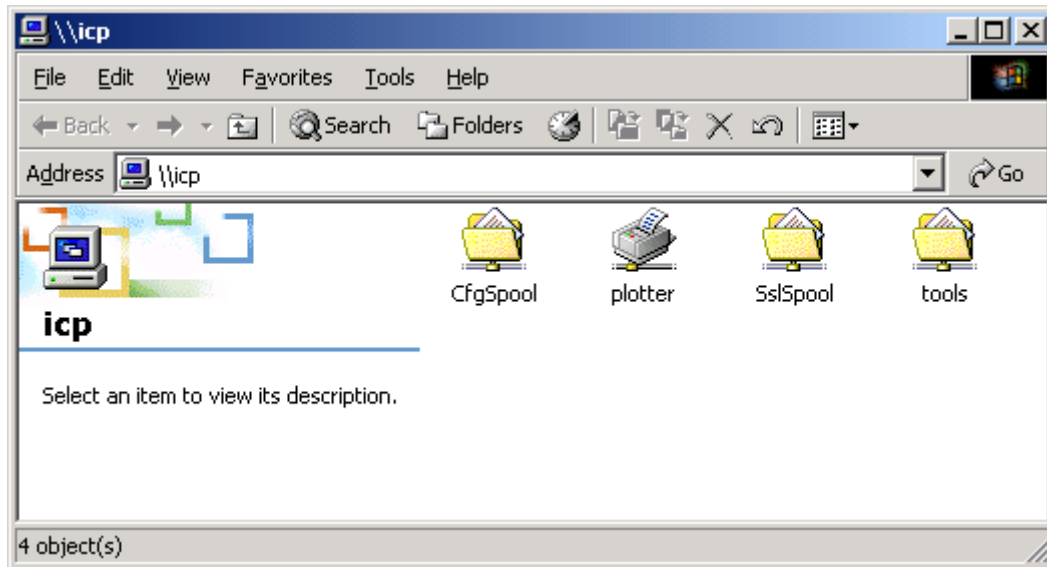
With a physical connection now established type in the computername for the Controller in the **Run** command and click **OK**.



Section 3

Network Configuration

Connection to the computer is established and the following screen is displayed along with the available shares.



Network configuration completed.

Section 4

Installing Applications

Step 1

Installation of the KM-PLOTCLIENT

To install the program, please proceed as follows.

Start Windows [2000/NT] as a user with administrator rights.

If Windows [2000/NT] was already started [with administrator rights], please quit all running programs or backup the data.

Place the KyoceraMita installation CD on your drive and wait for “Autorun” opening the installation dialogue. If you have switched off the autorun function on your PC browse via Windows Explorer to the CD ROM directory and start “autorun.exe” in the first sub-folder “Autorun”.

The setup program will open the following dialogue “Setup Loader”



Choose the program Plotclient to be installed and click once on the button “Start Setup”.

Select the SETUP language, and then **click** on OK.

Click on NEXT.

Click on YES, if you agree to the license agreement. **Click** on NO, if you do not agree and want to abort the installation.

Answer the question about the Readme-file, and **click** on NEXT.

Section 4

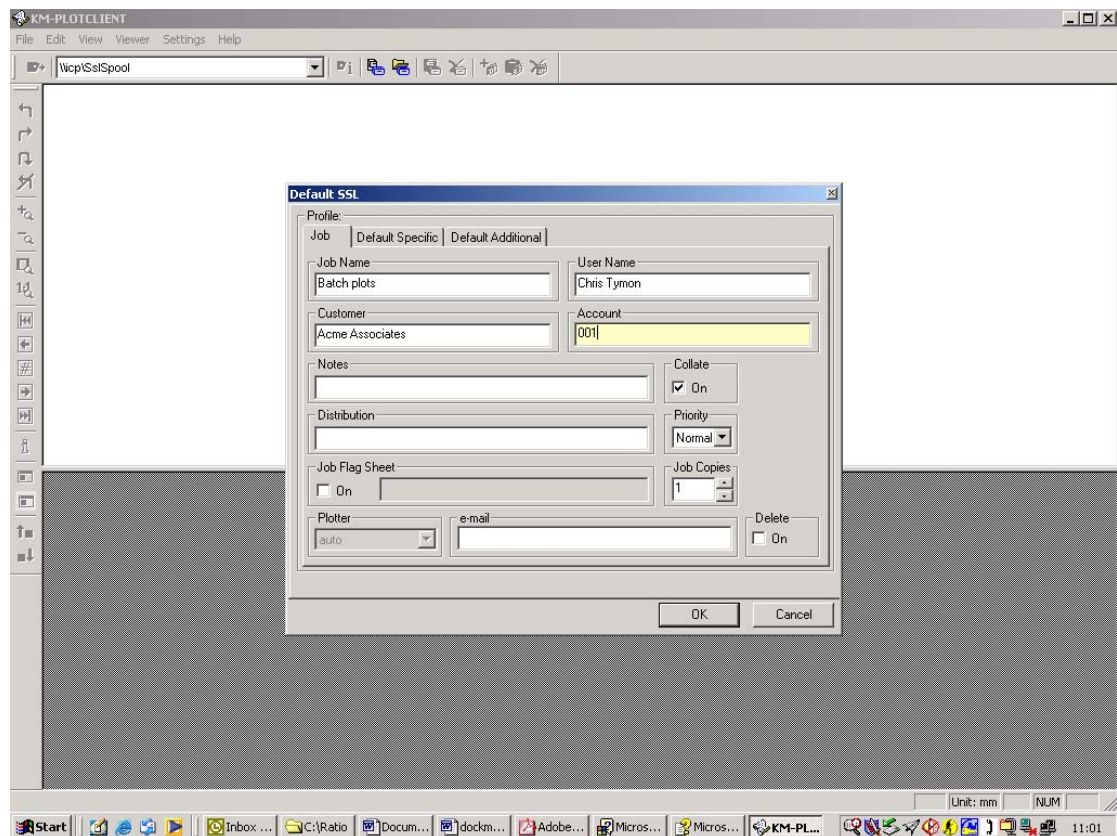
Click on NEXT, to confirm the target folder, in which KMLOTCLIENT is to be installed.

Click on NEXT, to confirm the unchanged or changed program folder.

Determine the SSL Spool folder. The standard preset is the folder “\\KyoceraMita\sslspool”.

The first part “\\KyoceraMita” determines the computername (NETBIOS name), on which KM-ICP is running. The second part “\sslspool” gives the spool folder that is shared from the Plotter. For example, providing that the computername “**icp**” is available on the network then enter [\\icp\spool](#).

KM-PLOTCLIENT is then installed. After installation is complete you can run the application. Please read the help files regarding setting up the program.



Section 4

Installing Applications

Step 2

Installation of the KM-PLOTCLIENT ADI/HDI

AutoCAD 2000, 2000i, 2002LT

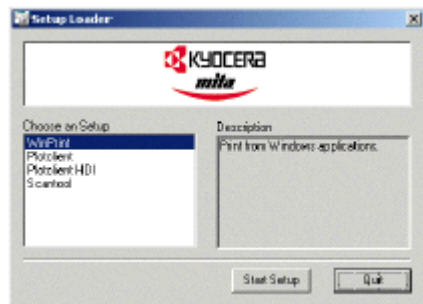
To install the program, please proceed as follows.

Start Windows [2000/NT] as a user with administrator rights.

If Windows [2000/NT] was already started [with administrator rights], please quit all running programs or backup the data.

Place the KyoceraMita installation CD on your drive and wait for “Autorun” opening the installation dialogue. If you have switched off the autorun function on your PC browse via Windows Explorer to the CD ROM directory and start “autorun.exe” in the first sub-folder “Autorun”.

The setup program will open the following dialogue “Setup Loader”



Choose the program Plotclient ADI/HDI to be installed and click once on the button “Start Setup”.

Select the SETUP language, and then **click** on OK.

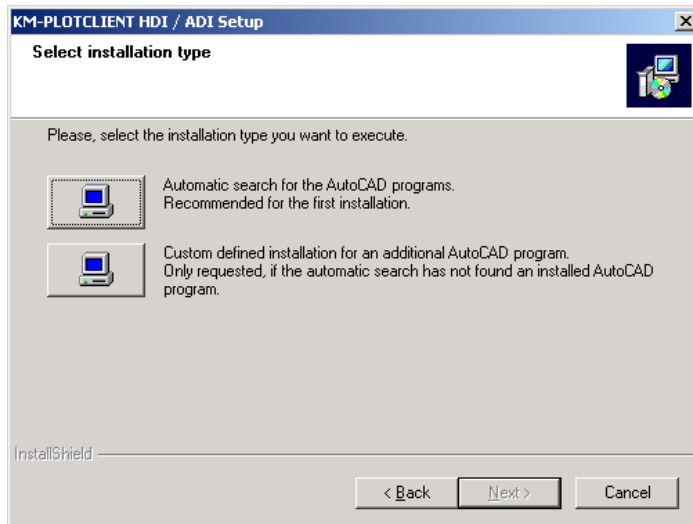
Click on NEXT.

Click on YES, if you agree to the license agreement. **Click** on NO, if you do not agree and want to abort the installation.

Answer the question about the Readme-file, and **click** on NEXT.

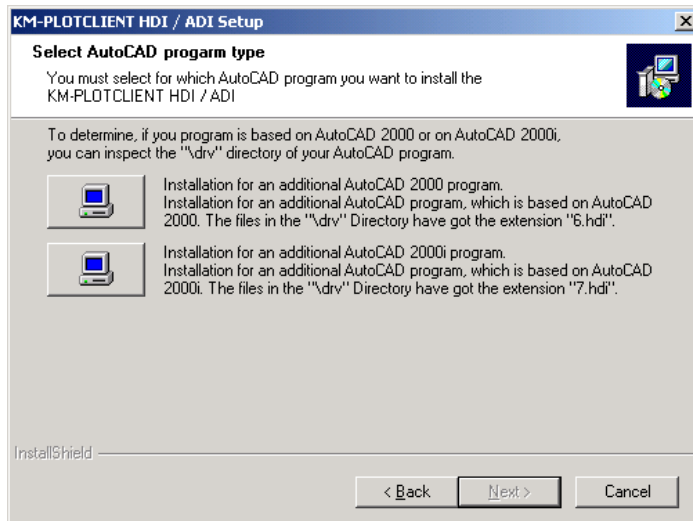
Section 4

The “Select installation type” window appears



If the AutoCAD program has been installed on the C drive choose “Automatic”, otherwise choose custom and the **click** next.

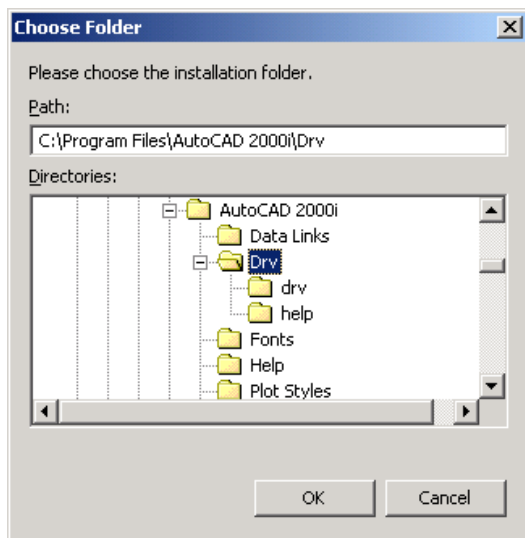
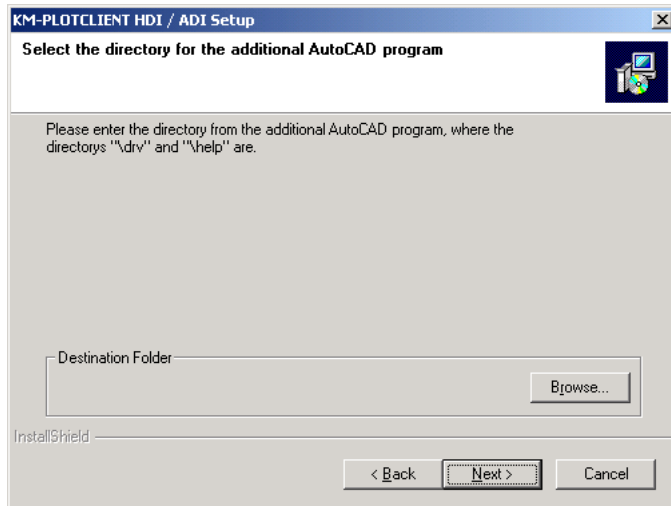
With the selection of Custom the following window is displayed.



To determine whether which file extension you have. Launch Windows explorer and browse to the DRV directory within AutoCAD to view extensions on the files. Once you have determined between “6.hdi” and “7.hdi make your selection and **click** Next.

Section 4

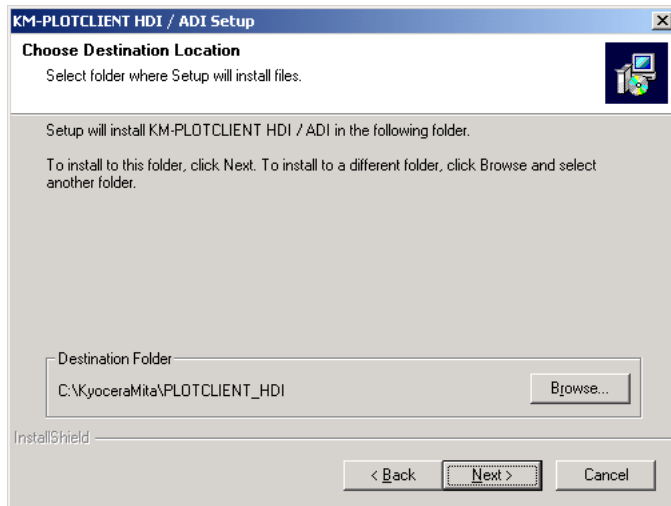
Use the Browse button to locate the DRV directory as per the Choose folder window below.



Click OK and then **click Next**.

Section 4

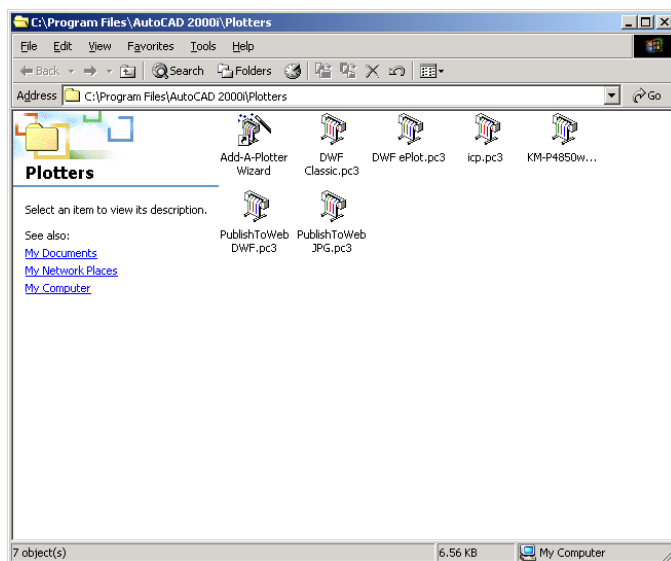
The Choose destination folder window appears for the rest of the program files. Make your selection and **click** Next.



After Plotclient ADI/HDI has finished installing we can move onto the next stage of configuring AutoCAD for the new plotter.

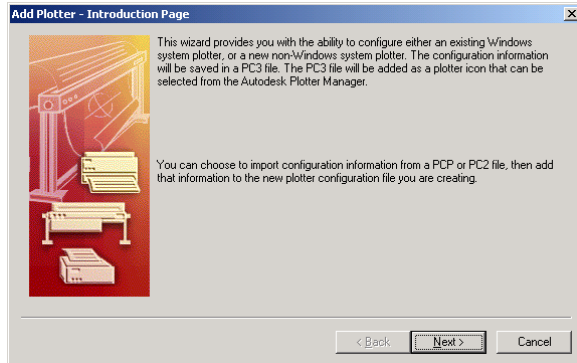
Configuring AutoCAD

Launch AutoCAD and then from the File menu choose “Plotter Manager”.

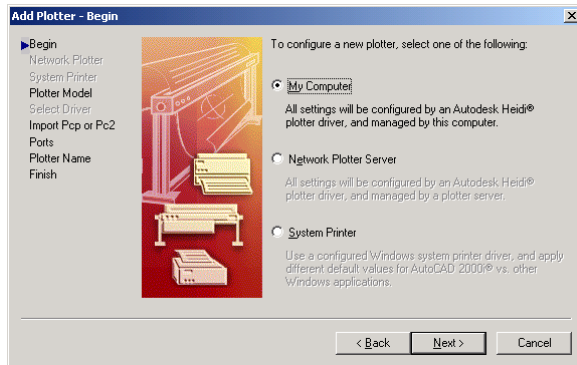


Section 4

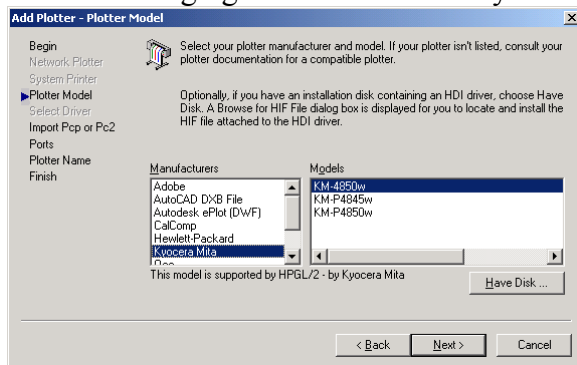
Select the “Add Plotter Wizard” and the Introduction page is displayed.



Read the information and **click** Next.



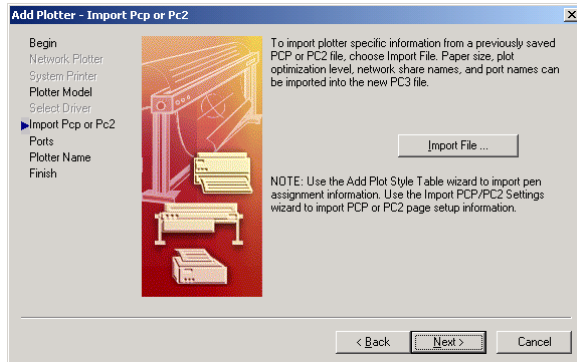
Without changing the default radio **My Computer** **click** Next.



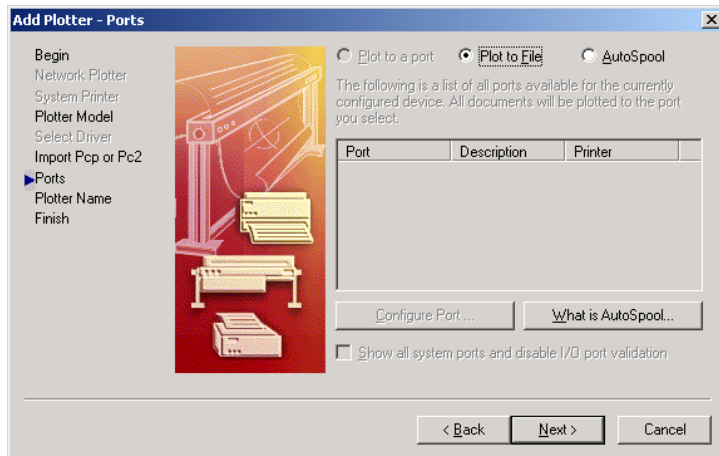
With the Plotter Model window displayed choose Kyoceramita from the manufacturers pain the select the model in the right pain.

Section 4

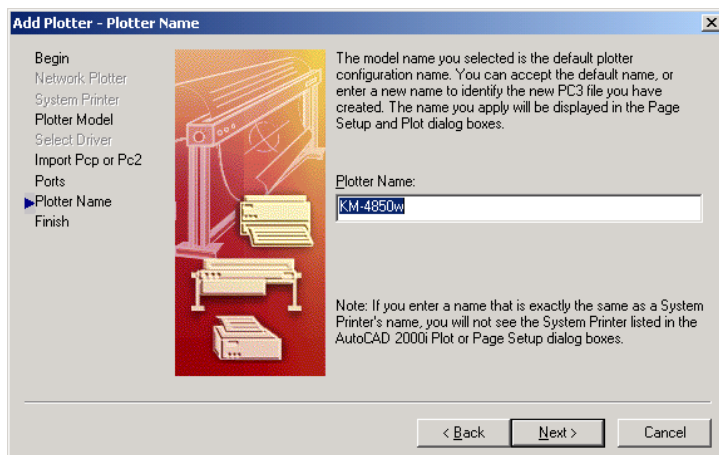
Click Next on the Import PCP or PC2 window



On the Add plotter ports page take the default radio button “Print to file” and click Next.

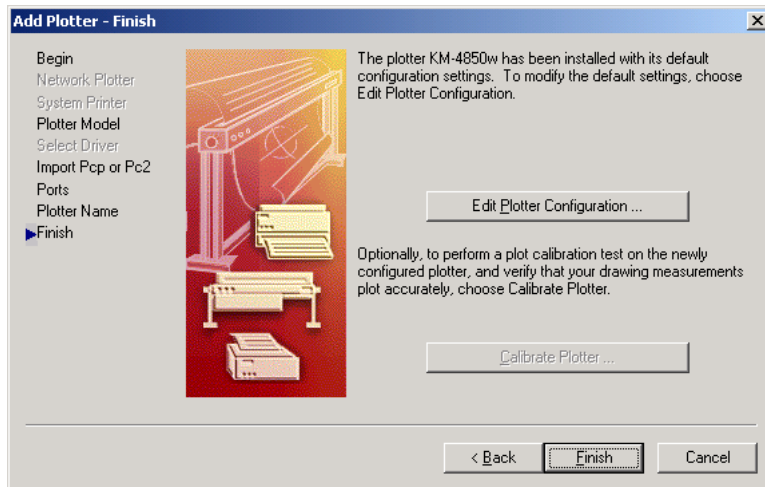


The Add plotter window is displayed. Name your plotter and click Next.

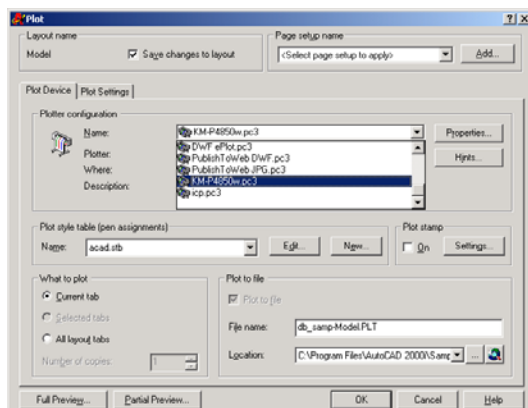


Section 4

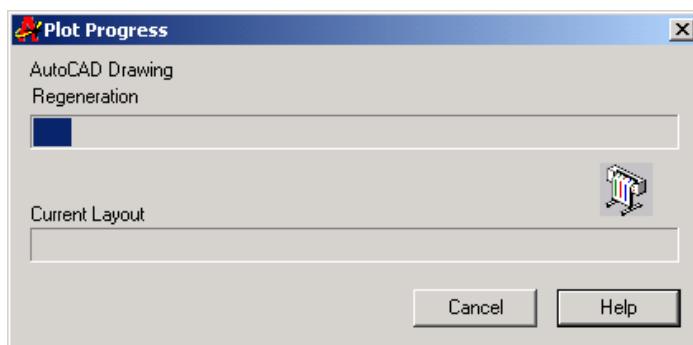
The Finish window is displayed. **Click** on Finish.



We now need to open a drawing and select plot. The new plotter is displayed in the Plot Device tab.

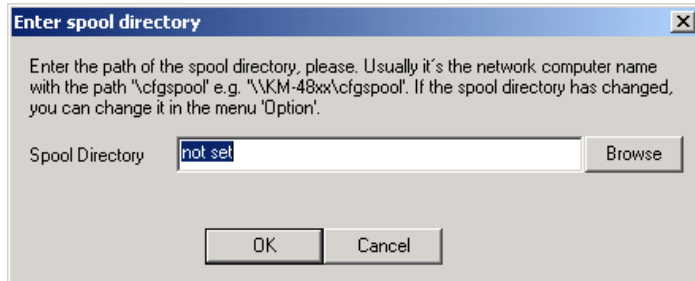


Click OK and the Plot Progress window appears and Regeneration will achieve about 75% of the window and pause. After a short amount of time the Spool directory window is displayed.

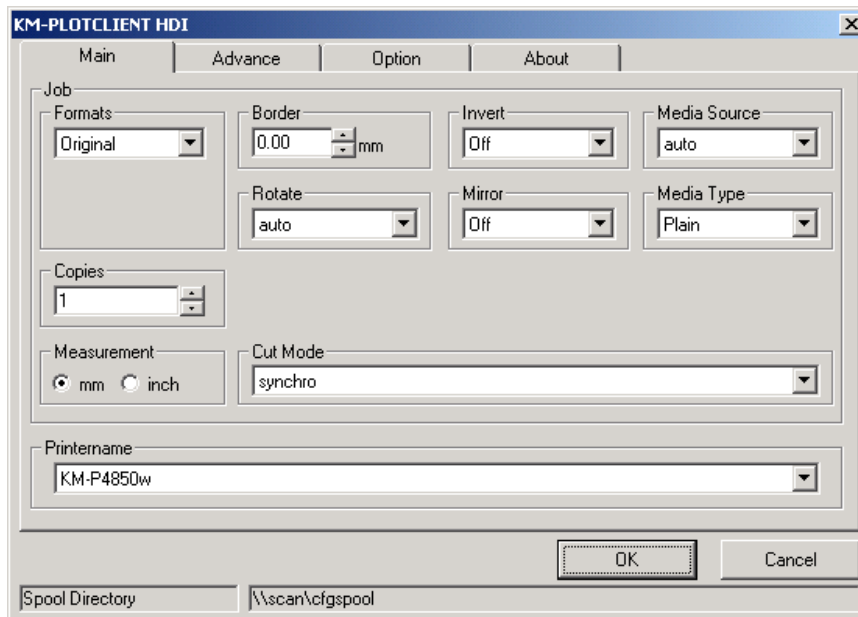


Section 4

Type in the path for the CFGSpool. The dialog box appears the first time you send a job to the plotter. **Click OK.**



Make your selections and click ok



AutoCAD completes Regeneration and file is sent to the controller.

Section 4

Installing Applications

Step 3

Installation of the KM-SCANTOOL

To install the program, please proceed as follows.

Start Windows [2000/NT] as a user with administrator rights.

If Windows [2000/NT] was already started [with administrator rights], please quit all running programs or backup the data.

Place the KyoceraMita installation CD on your drive and wait for “Autorun” opening the installation dialogue. If you have switched off the autorun function on your PC browse via Windows Explorer to the CD ROM directory and start “autorun.exe” in the first sub-folder “Autorun”.

The setup program will open the following dialogue “Setup Loader”



Choose the program Scantool to be installed and click once on the button “Start Setup”.

Select the SETUP language, and then **click** on OK.

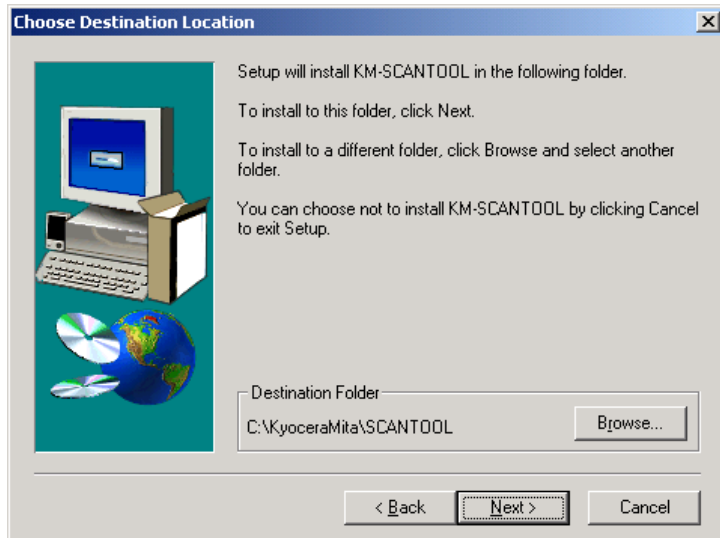
Click on NEXT.

Click on YES, if you agree to the license agreement. **Click** on NO, if you do not agree and want to abort the installation.

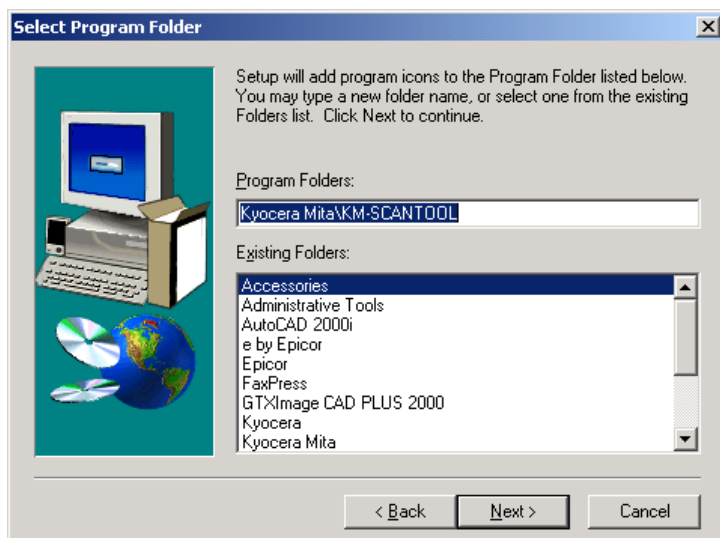
Answer the question about the Readme-file, and **click** on NEXT.

Section 4

The Choose destination location screen is displayed. Make your selection and **click Next**.

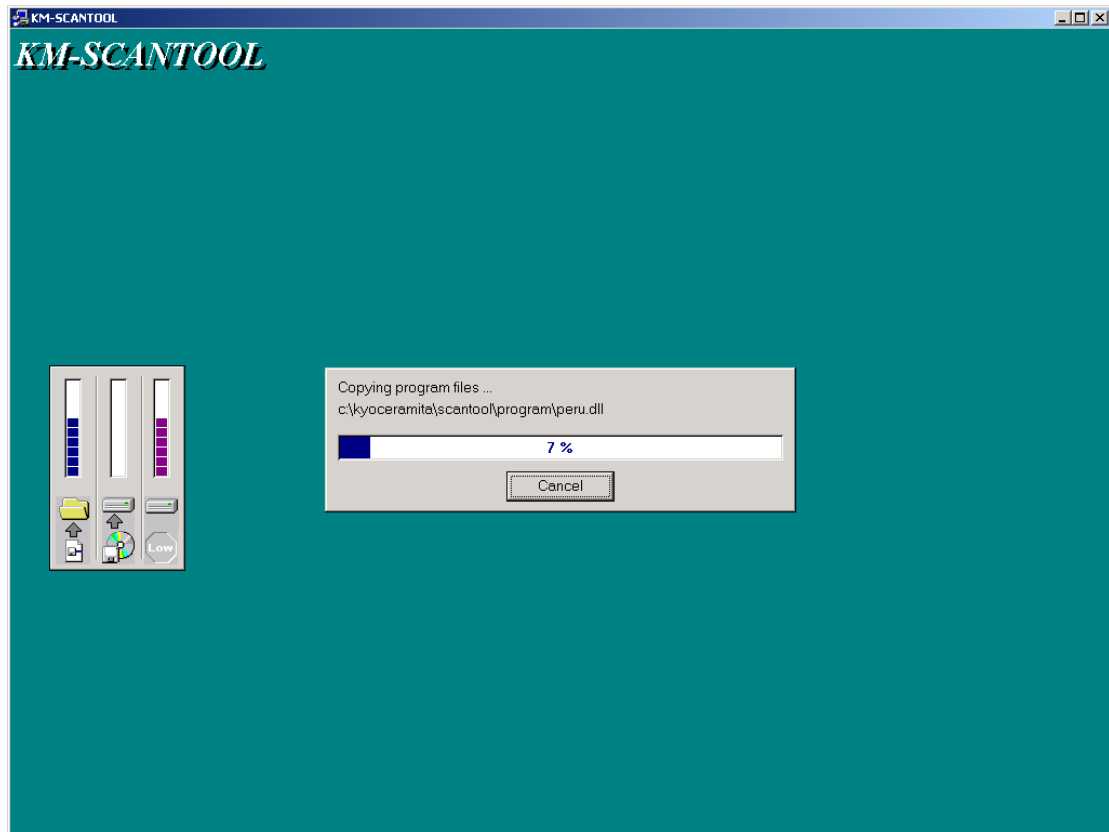


The Select program folder screen appears is displayed. Make your selection and **click Next**.



Section 4

Copying of the program files begins.



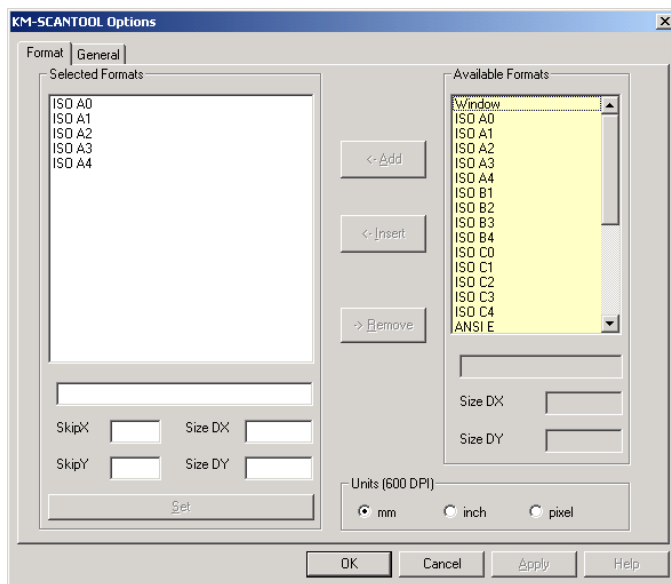
Once completed you can run Scantool from its location.



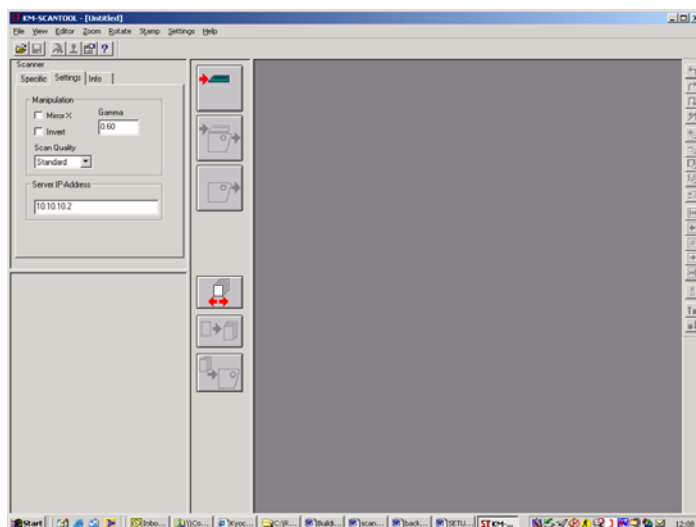
Section 4

Configuring Scantool for scanning and Plotting

Open Scantool and **click** on the Settings and select the Options button. On the Formats tab add the scan format sizes from the Available formats (right pain) to the Selected formats (left pain). **Click** OK to close window.

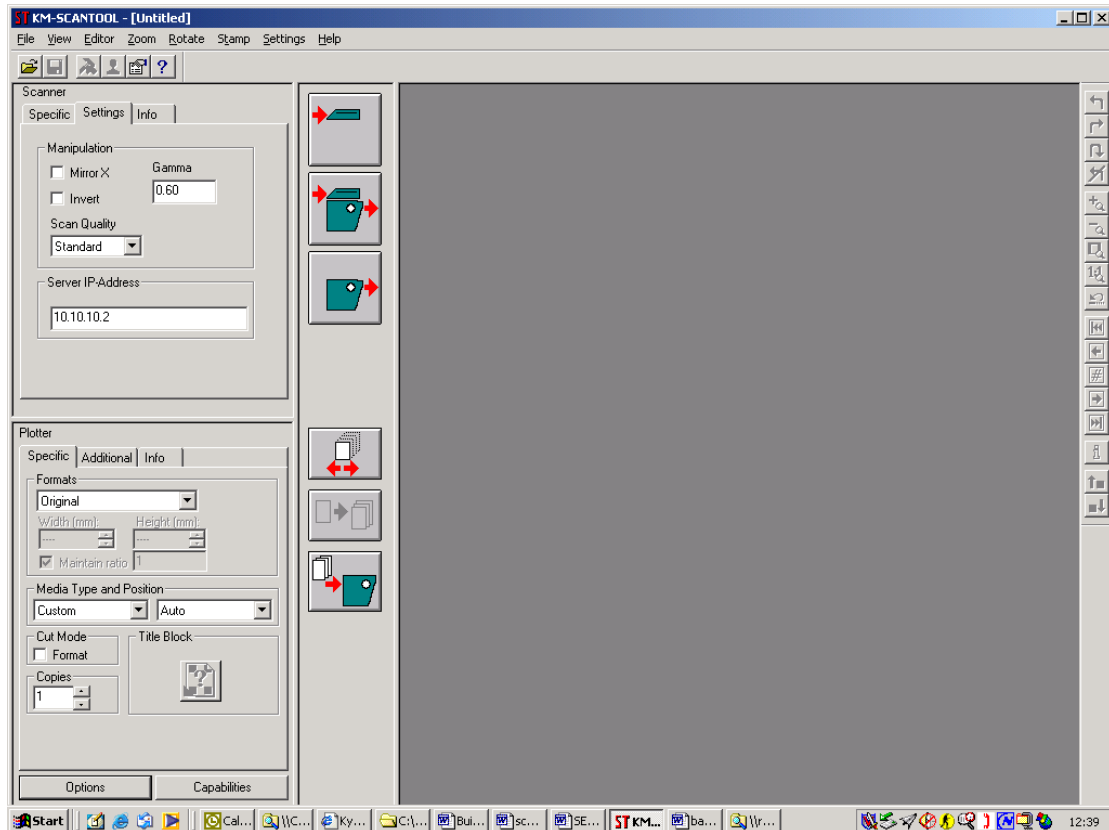


From the Settings menu, now **click** Reload scanner. The scanner tabs will appear in the top left hand frame. From the Scanner Settings tab type in the IP address of the Controller and then click Reload scanner from the Settings menu.

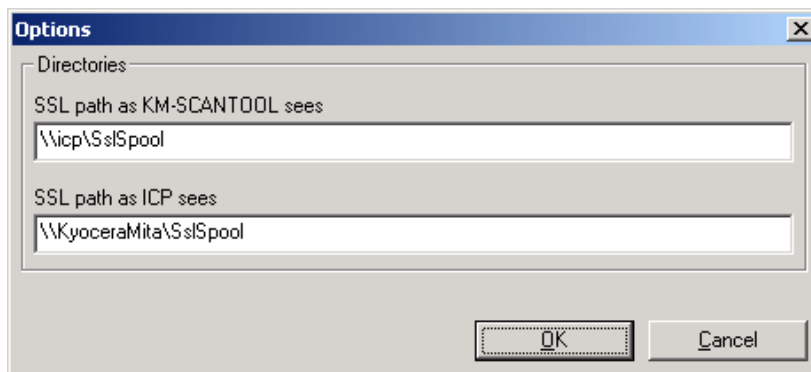


Section 4

If you need to enable plotting from scantool, from the Settings menu click Reload plotter. The plotter will be displayed in the lower left pain.



We now need to configure the URL path. Click on the Options button in the bottom left hand frame to display the URL paths. In the top window change the computername to the computername of the Controller. In the lower window change the computername to the name of the Scantool computername and **click OK**.



Plotting from Scantool is now configured.

Section 4

Configuring WinPrint driver

To install the program, please proceed as follows.

Start Windows [2000/NT] as a user with administrator rights.

If Windows [2000/NT] was already started [with administrator rights], please quit all running programs or backup the data.

Place the KyoceraMita installation CD on your drive and wait for “Autorun” opening the installation dialogue. If you have switched off the autorun function on your PC browse via Windows Explorer to the CD ROM directory and start “autorun.exe” in the first sub-folder “Autorun”.

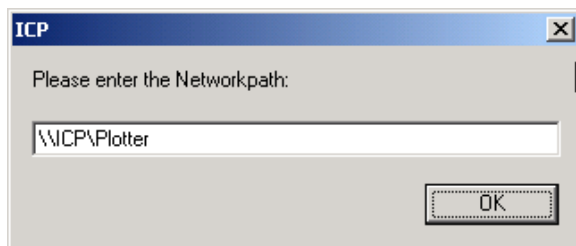
The setup program will open the following dialogue “Setup Loader”



Choose the program KM WinPrint to be installed and click once on the button “Start Setup”.

The welcome page is displayed **click** Next

Network path dialog box is displayed. Enter the [\\<computername>\<sharename>](#) syntax and **click** OK.

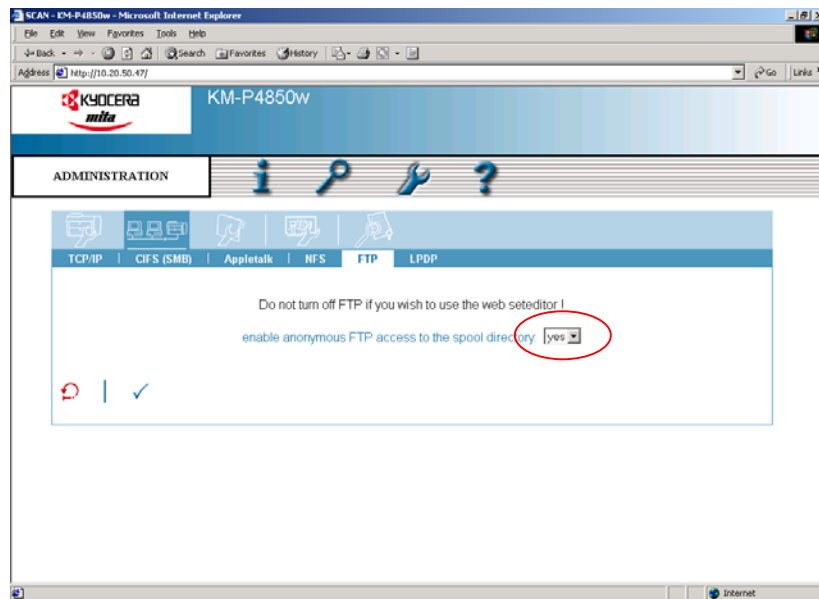


The installation of the winPrint driver is now complete.

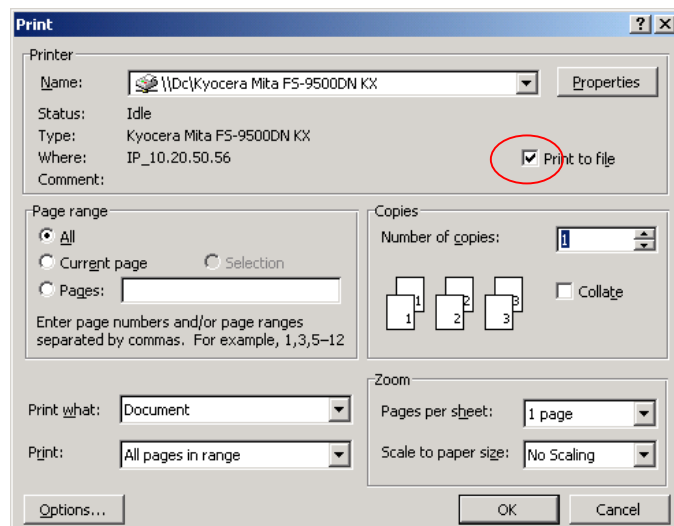
Section 5

Submitting plots via FTP

Prior to submitting plots via FTP, please ensure that FTP is enabled via the Controllers Admin web page.

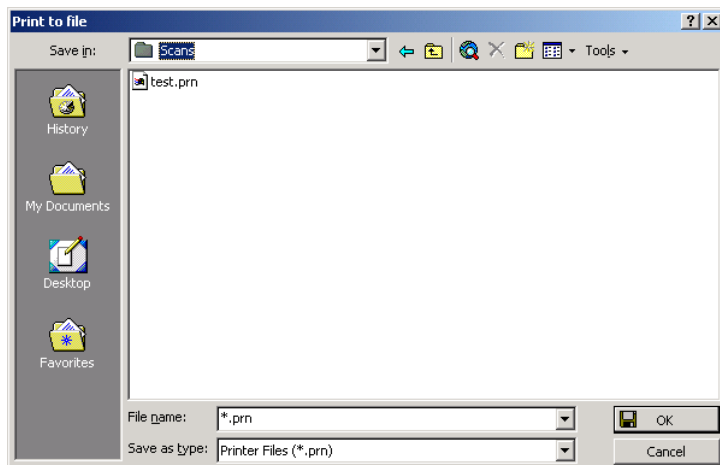


From the windows print driver select the Print to file option

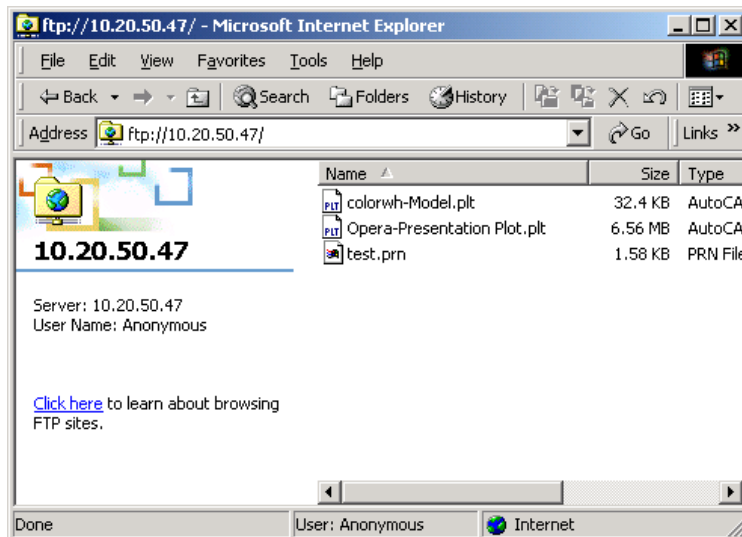


Section 5

Save the file to your desired location



Open an FTP session with the Controller and I suggest you save it to your Favorites on your web browser. Now simply copy and paste the files you have just saved into the browser window



Section 6

Controller Firmware update procedure

To update the Firmware open your browser and enter the IP address of the Controller.
Click on the Admin icon and log in

A dialog will be appeared on the screen, please enter:

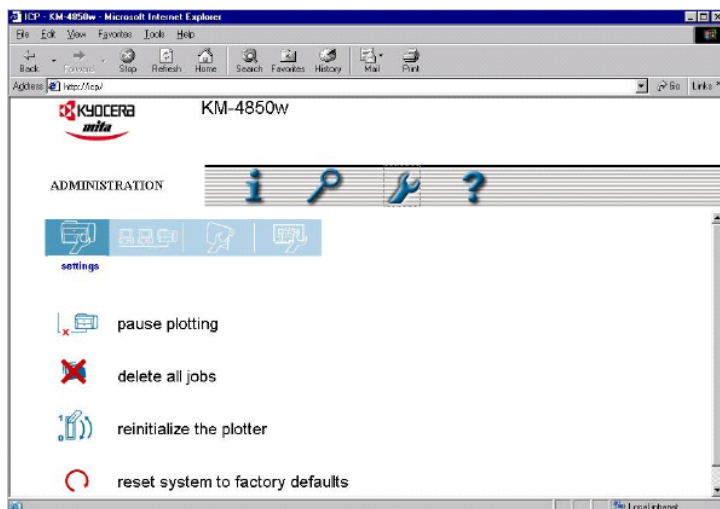
User name: admin

Password: admin

And **Click** OK



The Administrator page will be displayed

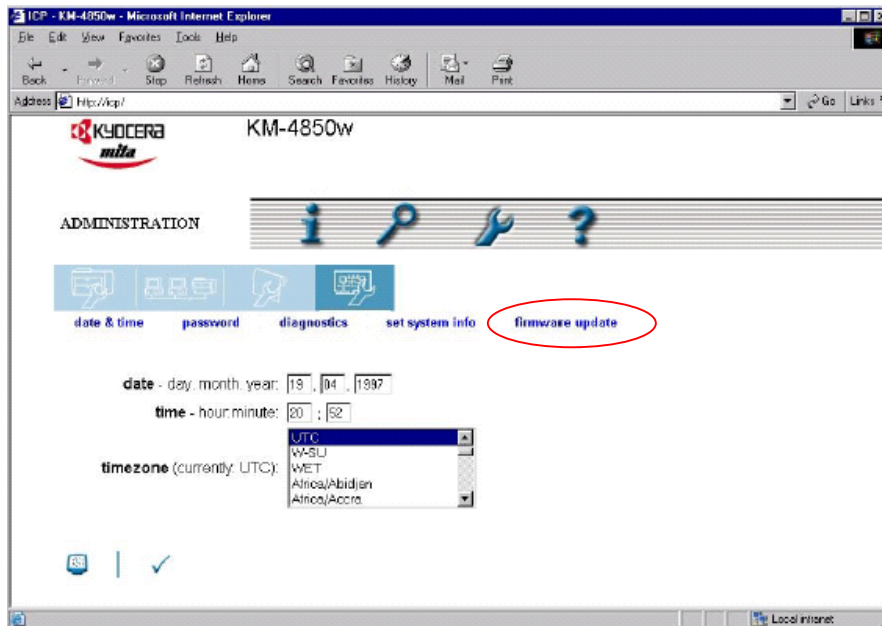


Section 6

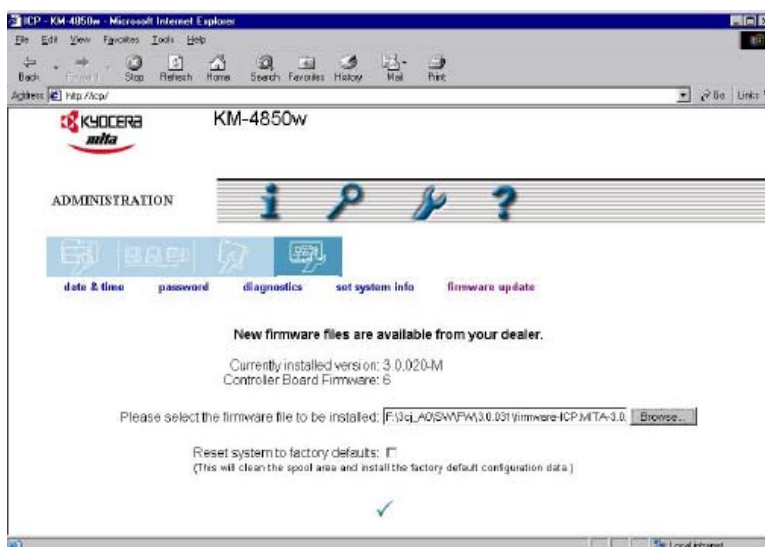
Click on the Controller icon



With the Controller menu displayed **click** Firmware update

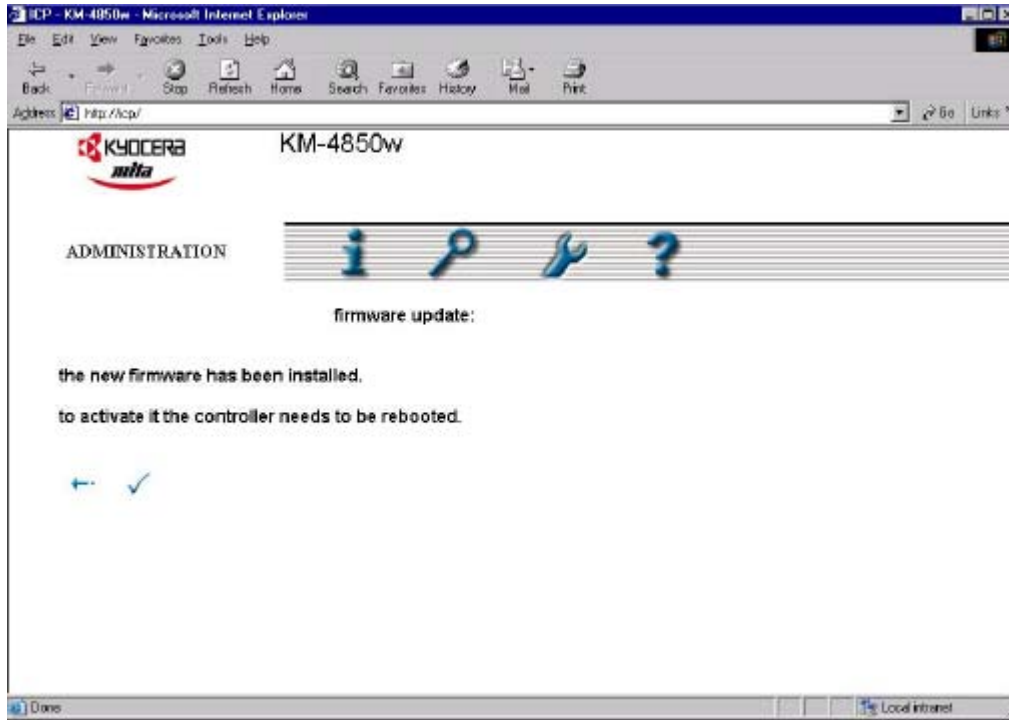


The update menu appears prompting you to browse to the firmware update file and simply click the blue arrow at the bottom of the page to download the file

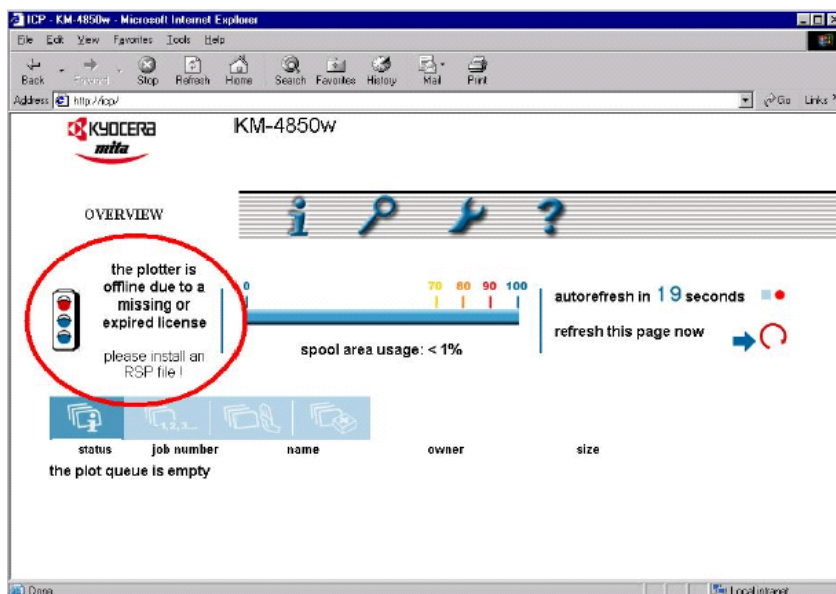


Section 6

After the file has been downloaded (approx 5 minutes) the below page is displayed and you can reboot the Controller as instructed



When the Controller reboots you may see the following highlighted message in the web page



Section 6

To receive a new RSP file goes to the XX menu and follow the instructions to register and receive a new RSP file via email



Once you have received the file via email, save it locally and then browse to the location and then **click** on the blue arrow to activate the Controller (do not unzip the file). With the new licence installed the web page displays Ready as below

